



Capability Statement 2021

www.pmtpl.com

About Us

PMT Infrascience, established in 1975 is a known for providing innovative, integrated and customized solutions with unique amalgamation of **Manufacturing** and **Consultancy** for Infrastructure Projects and Mines.

We Design, Manufacture, Provide, Install, Monitor, Analyze and Interpret wide range of instruments for Geotechnical, Geophysical, Structural Health Monitoring, Environmental Monitoring, Structural and safety analysis, etc. for **Roads, Railways, Hydro Power Projects, Underground Mines, Tunnels, Bridges, Foundations, LPG Storage, Dams, etc. including other civil engineering domains.**

More than 500kms in tunnel, 75 hydro-projects, 25 mines & underground projects, slope stabilization & other structures and educational institutions.

About Us

We are **ISO 9001 Certified Company** with more than **25000 square feet** modern facility, incorporating latest manufacturing techniques backed with well **established laboratory and calibration setup** assuring highest quality Instruments.

Our **Integrated solutions** combine our Instruments, Dataloggers, and Application Software's with wired and wireless technology to provide **Artificial Intelligence Enabled Internet of Things (IoT)**. It makes us capable to provide solution to problems throughout the life cycle of an Infrastructure.

We also provide **comprehensive engineering technical consulting services** to infrastructure sector for Detailed Project Report, Pre- Feasibility & Feasibility studies, Pre-bid services, Tender Design, Detailed Design and Project Management.



Vision

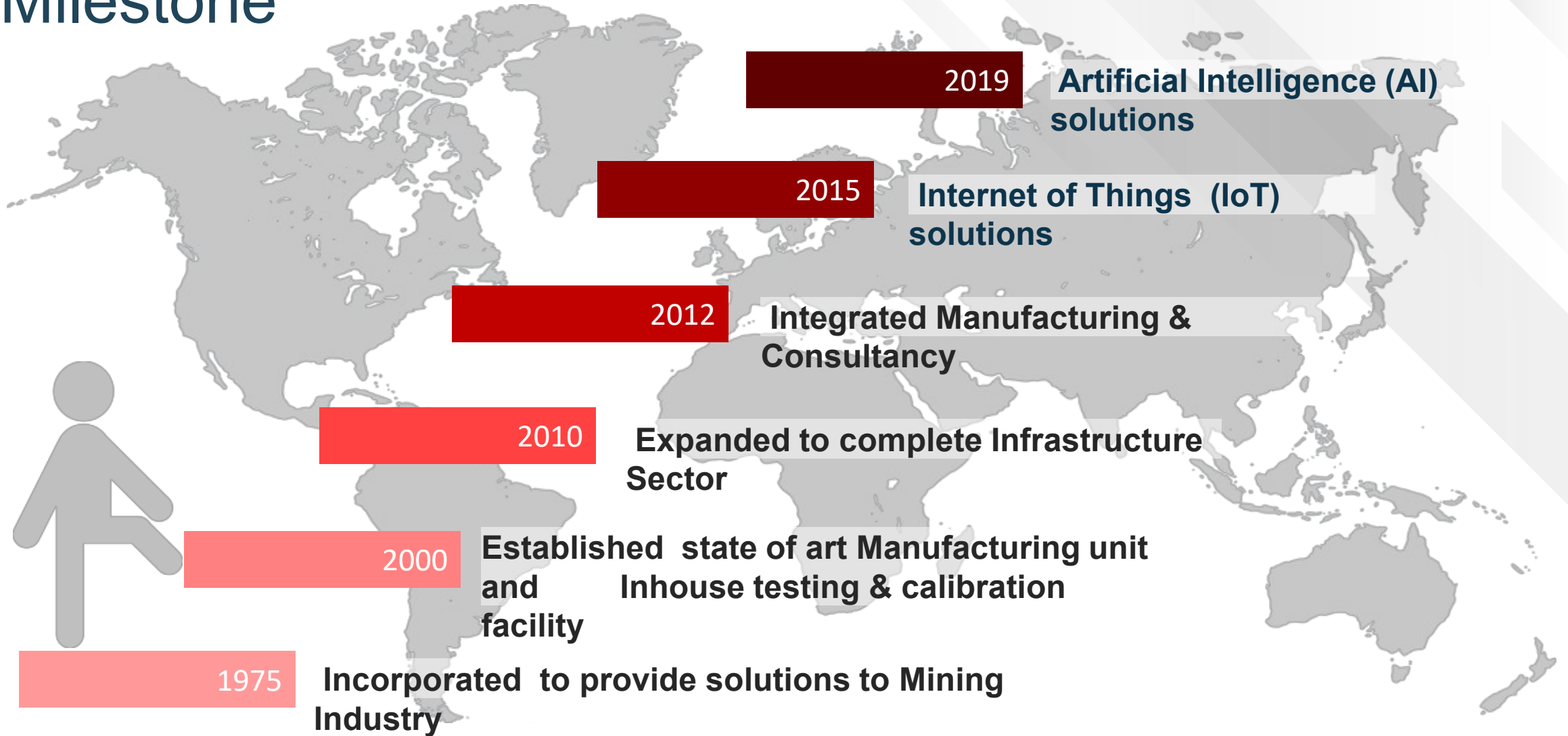
- To be most **trusted partner** of our customer.
- To be a Global leader in providing **Integrated Instrumentation and Consulting Services** for Infrastructure projects and Mines.
- To provide solutions by adopting **optimal engineering methodologies and integrated solutions in compliance with codes and standards.**



Mission

- To **deliver Innovative, Integrated & Customized solutions in Manufacturing and Consultancy**, while leading as a premier instrumentation and service provider for infrastructure, civil engineering, structural monitoring, geotechnical, geophysical, geospatial, water resources and level monitoring applications. Moreover, the company endeavor to bring innovative products, good services, new ventures and latest technologies for the market.
- To **operate in a transparent and ethical value system**, which delivers quality at every step and earns trust and respect from our customers.

Milestone



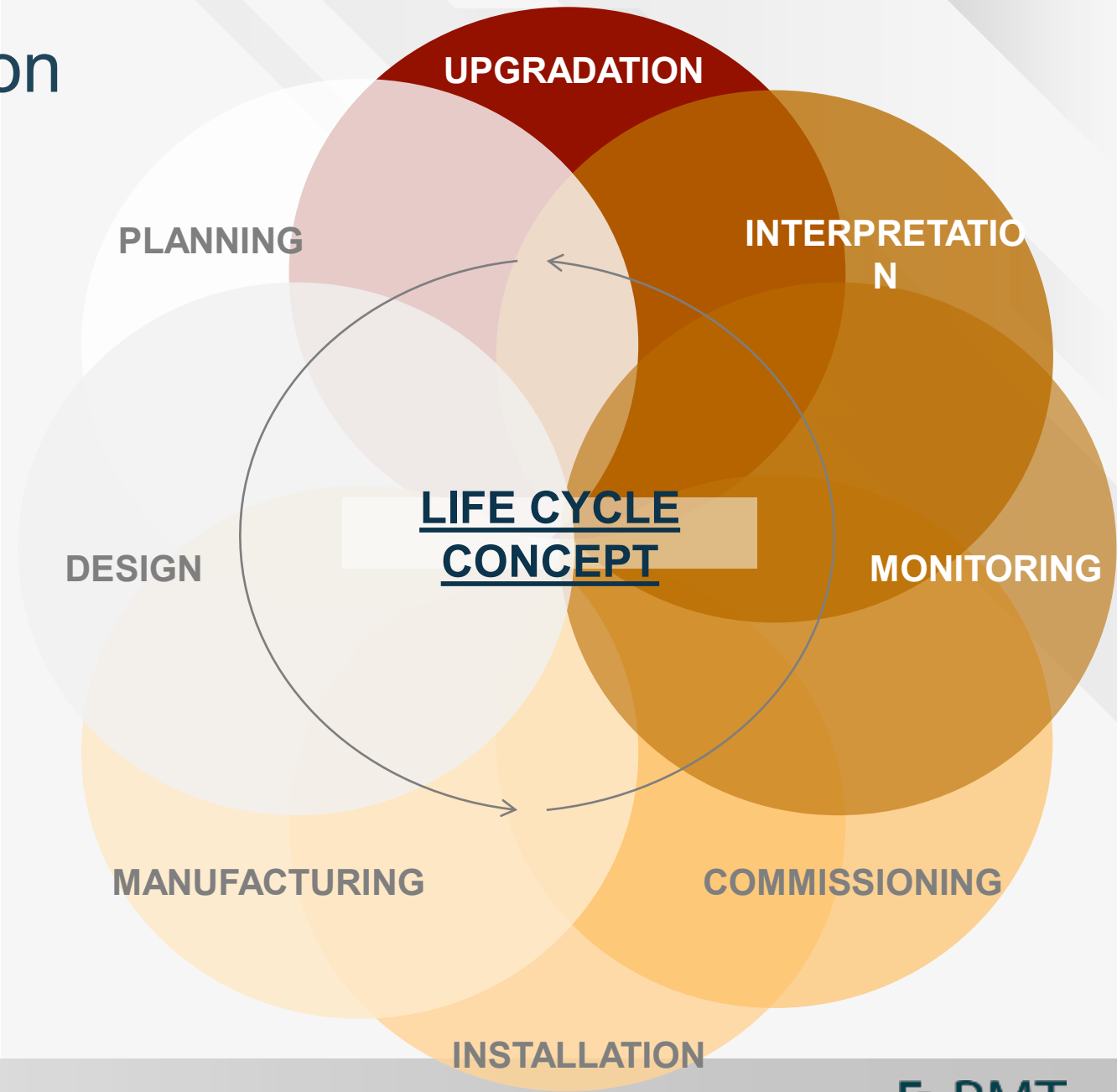
Our presence



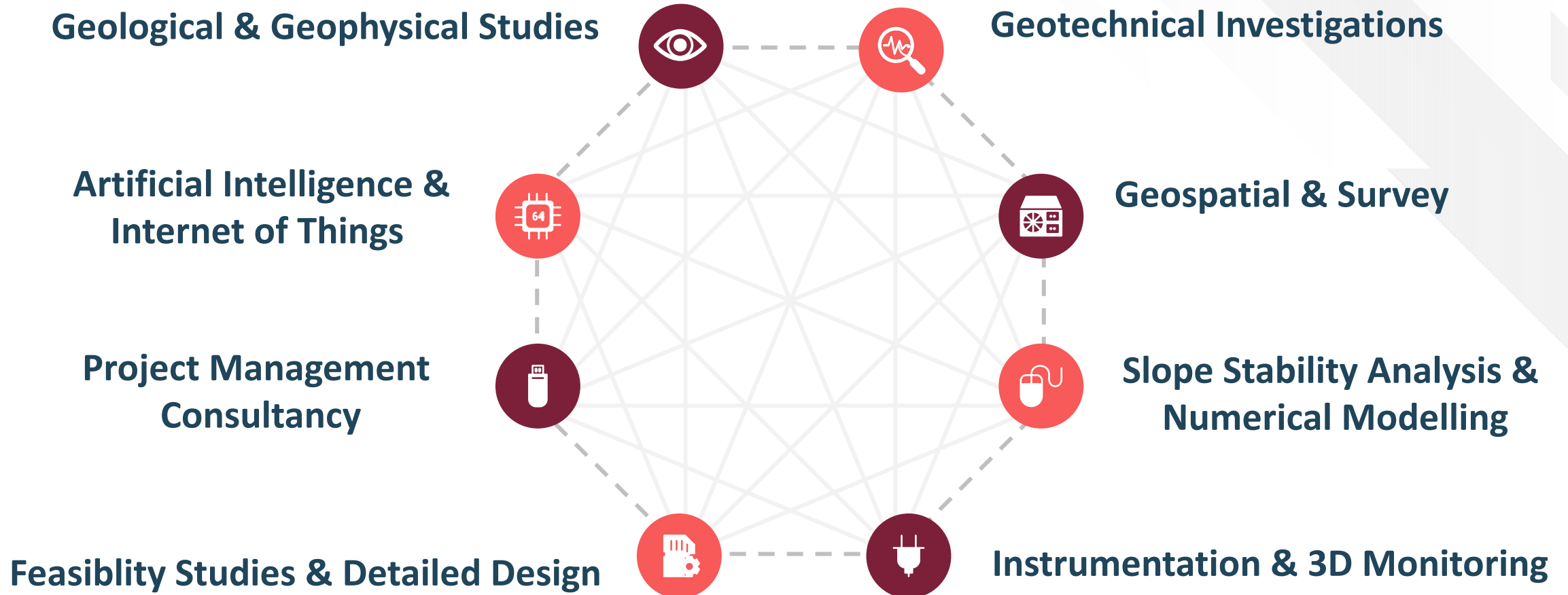
Integrated Customized Solution

“We provide **customized end to end integrated solution for instruments** in Infrastructure domain for the complete life cycle of the project .”

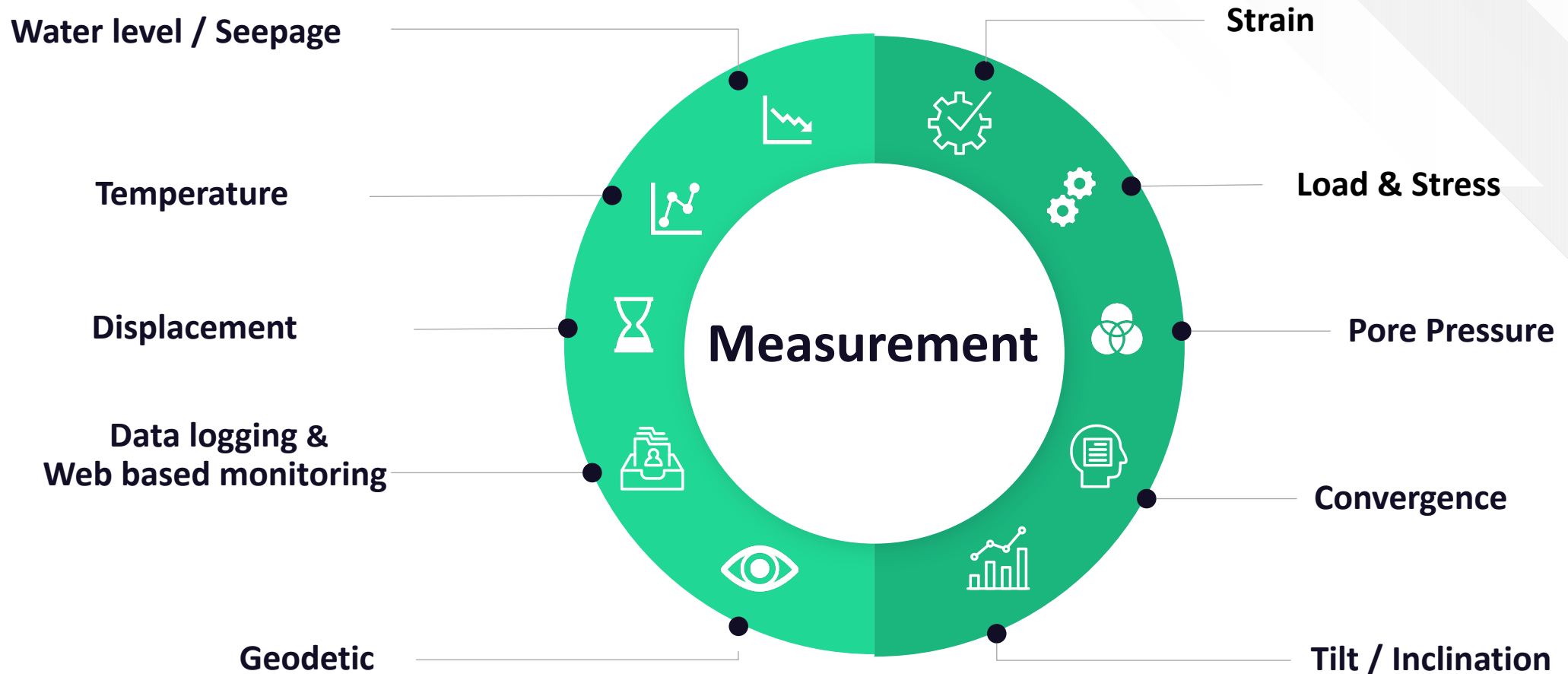
“Our **integration of manufacturing and inhouse consultancy assists in providing comprehensive solution** with cutting edge technology combined with in-depth knowledge of the infrastructure domain .”

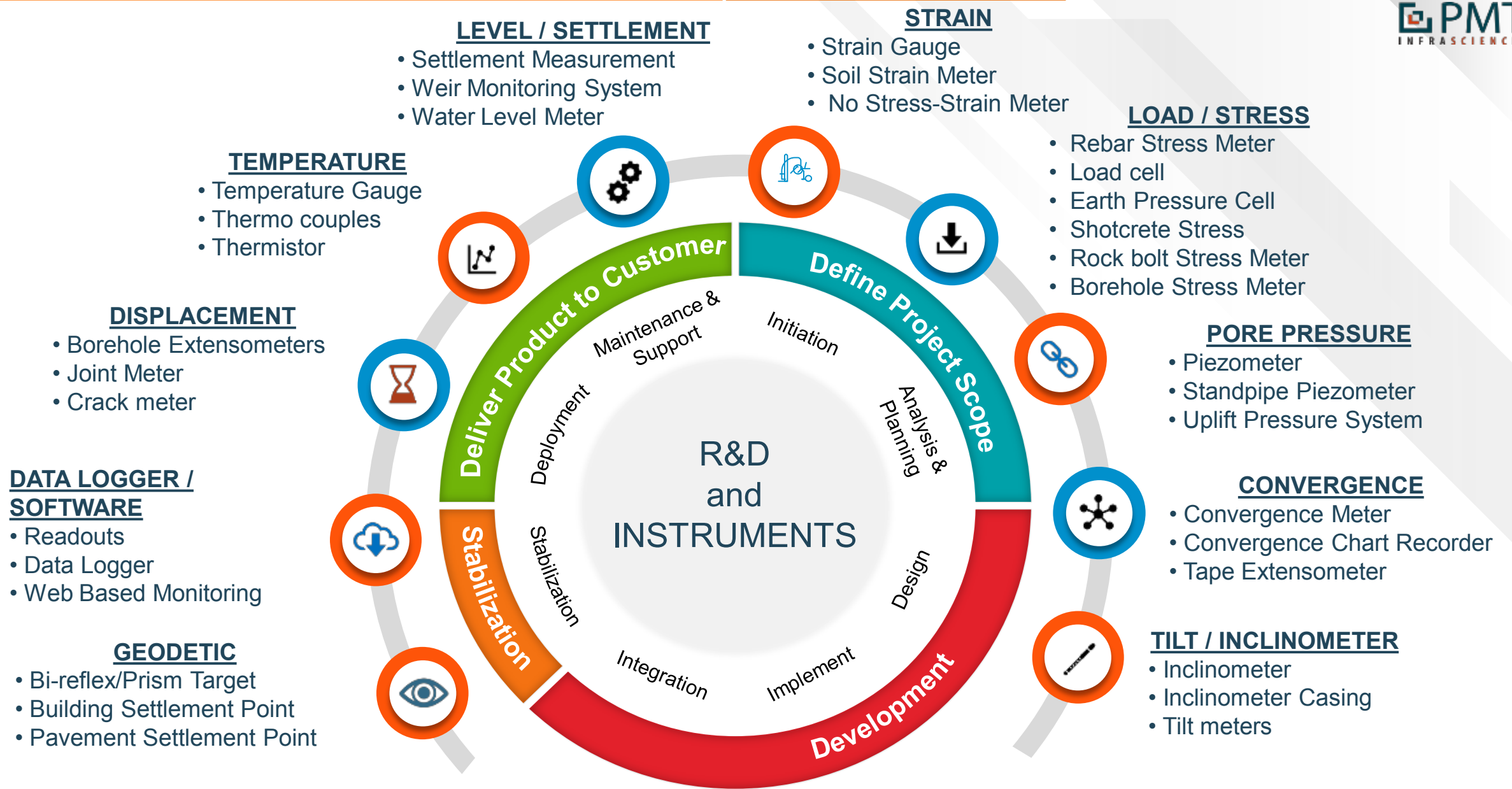


Services



Measurements





SUPPORT ITEMS

Anchorage Testing Machine / Automatic Weather Station / Junction Box / Sealing Kit / Blast Vibration Monitor / Strong Motion Accelerograph

Instruments



Laboratory & Calibration



NABL Accredited
Lab

ISO 9000
Standards

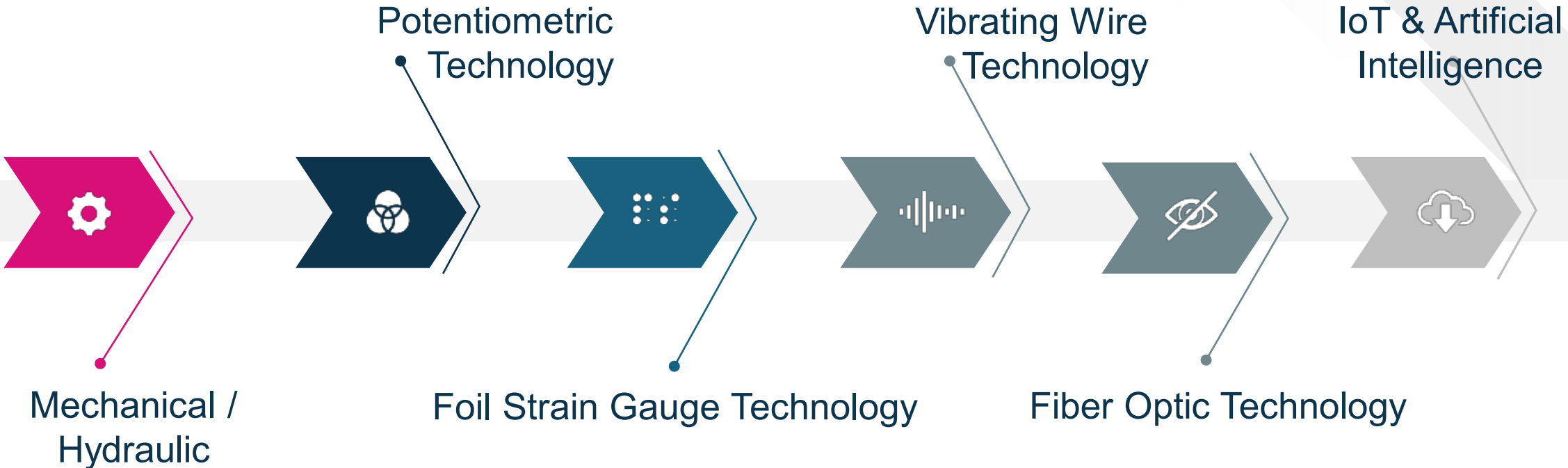
Documented
Calibration
Process

Traceable assets,
Proper
Documentation

Trained
Technicians

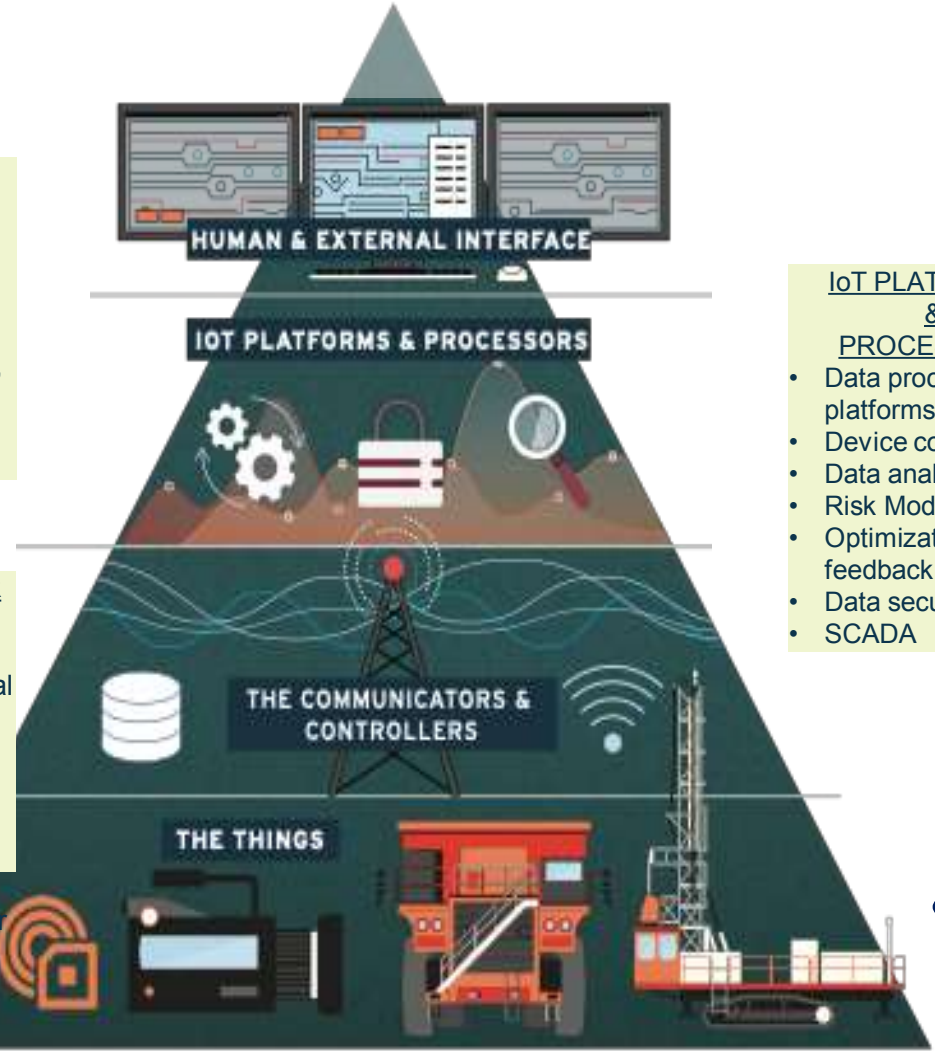
Our laboratory and calibration standards are employed to accomplish ISO 9001:2000 requirements with best equipment covering all aspects under trained manpower in all discipline. We are soon expecting our NABL accreditation too.

Technological Upgradation



Internet of Things(IoT) & Artificial Intelligence (AI)

- HUMAN & EXTERNAL INTERFACE**
- Management
 - Governance (e.g. Regulators, safety / Environment)
 - Integrated Remote Operation Centers
- COMMUNICATOR & CONTROLLERS**
- Networks (Global System for Mobile Radio, Satellite, Ethernet, Wireless Area Network)
 - Signal processor



IOT Enabled Instruments & Sensors

- IoT PLATFORMS & PROCESSORS**
- Data processing platforms
 - Device configuration
 - Data analytics
 - Risk Modelling
 - Optimization feedback loops
 - Data security
 - SCADA



- Smartness
- Vulnerability
- Intelligence
- Risk
- Health
- Stability



Step 5 Report

Step 4 Inference

Our Approach



Step 1 Any Infrastructure

Sensing Interface



Step 2 Data Acquisition



Step 3 Big Data

Data Processing

Internet of things(IoT) & Artificial Intelligence (AI)



Key Experts

“Our Experts, who lead each” assignment, are recognized experts in their field and act as advisors and peer reviewers in India and internationally”.

“It helps us partner at all levels with client to create added value to go above and beyond to deliver results that exceed expectations



Mr. B. D. Patni – Expert Geotechnical; Ex. Chief NHPC; Having more than 35 years of experiences in hydropower projects; geotechnical & instrumentations.

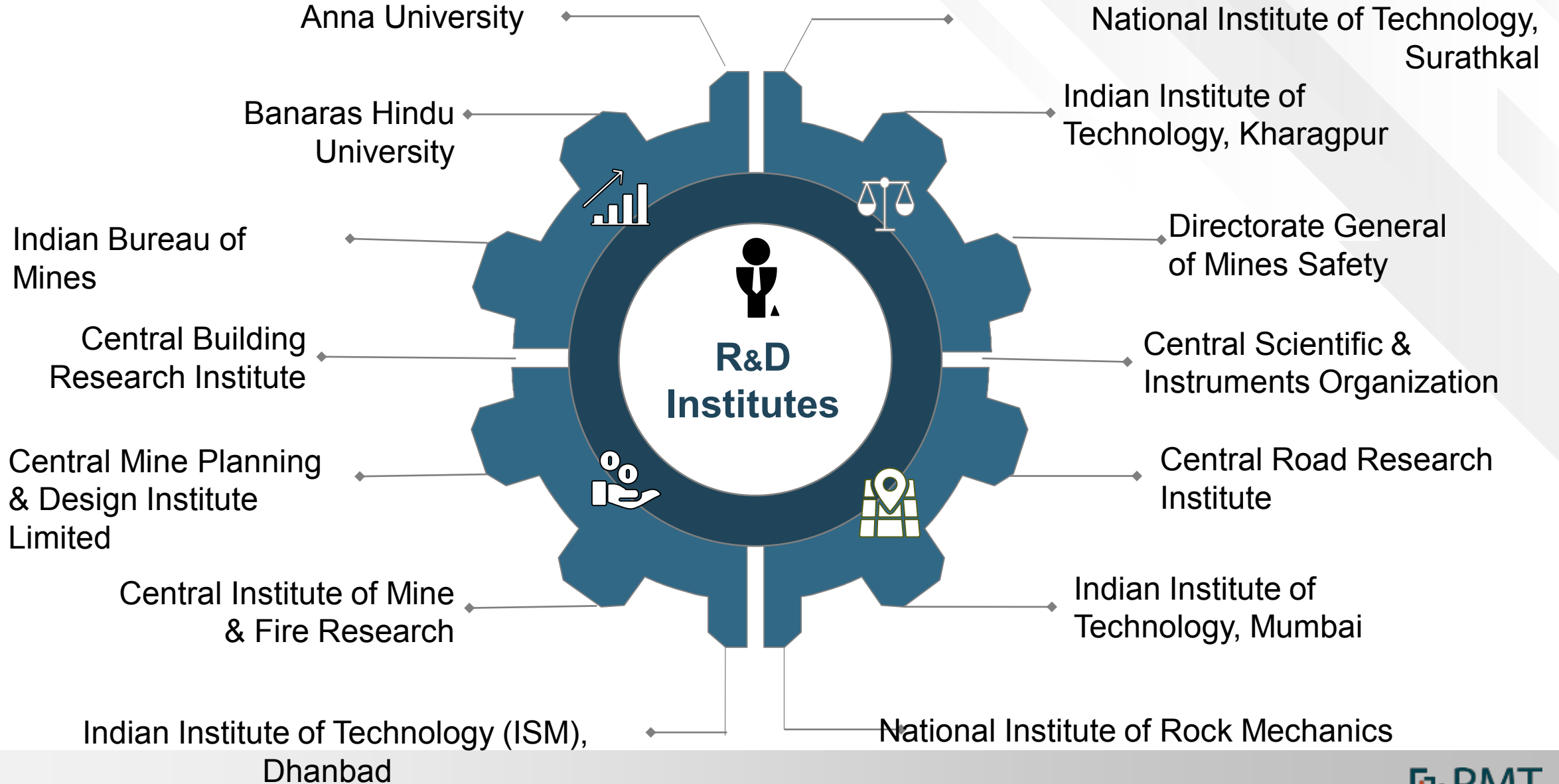


Dr V K Singh - Doctorate in Geology from IIT-BHU, followed by post doctoral fellowship in Rock Mechanics & Mining from SIU, Carbondale, USA. He has more than thirty five years of experience in the field. He has contributed at the highest level as Chief Scientist at Council of Scientific & Industrial Research.



Er. Hareesh Iyer - Hareesh is a highly-experienced engineer who is specialised in the instrumentation of bridges for structural health monitoring. He has contributed the technical support to the development of smart sensors, manufactured for tunnels, bridges, rails and highways

R&D Institutes



Hydroelectric Projects

NHPC



- Loktak HEP (MN)
- Parbati HEP – II (HP)
- Parbati HEP – III (HP)
- Baira Siul HEP (HP)
- Rangit HEP (SK)
- Salal HEP (J&K)
- Pakal Dul HEP (J&K)
- Ranganadi HEP (AR)

SJVNL



- Rampur HEP Shimla (HP)
- Luhri HEP (HP)
- NJHPS HEP (HP)

HPPCL



- Shongtong Karchham HEP (HP)
- Integrated Kashang HEP (HP)
- Sawra Kuddu HEP (HP)

NTPC



- Koldam HEP (HP)

BHUTAN



- Mangdechhu HEP
- Tala HEP

NEPAL



- Arun-3 HEP, SAPDC

OTHERS



- Koyna HEP (MH)
- Ghatghar HEP (MH)
- Mysore PCL (KA)
- Tehri HEP (UK)
- Upper Krishna HEP (KA)
- Upper Kolab PS (OD)
- Vyasi HEP, UJVNL (UK)
- Maneri Bhali HEP (UK)

Tunnels (Rail /Road /Metro)

NFR



- Tupul – Imphal (T12) MN
- Jiribam – Tupul (T1-T9) MN
- Bairabi-Sairang (T1-T5) MZ

- Bairabi-Sairang (T6-T15) MZ
- Bairabi-Sairang (T16-T23) MZ
- Sivok – Rangpo (T1&T2) (SK)

IRCON



- USBRL (T-15) J&K
- USBRL (T-2) J&K

- USBRL (T-15) J&K
- USBRL (T-2) J&K

East Coast Railway



- Talcher-Bimalgarh Project (OD)

Western Railway



- Tihi – Pithampur Project, (MP)

NHAI



- Pandoh Bypass Takoli Project (HP)
- Samruddhi Mahamarg (MH)
- Deoli Kota Road Project (RJ)
- Silkyara – Barkot Project (UK)

DRDO



- Vizag Project, Visakhapatnam (AP)

RVNL



- Bhanupali-Bilaspur-Beri (HP)
- Rishikesh – Karanprayag (Pkg-5) (UK)
- Nellore – Kadapa (AP)

OTHERS



- Thane-Belapur Road, MMRDA (MH)

Coal Mines

Coal India Ltd.

Mahanadi Coalfields Ltd.

Manganese Ore India Ltd.

Hindustan Copper Ltd.

EMTA Mines

Steel Authority of India Ltd.

Uranium Corporation of India Ltd.

Singareni Collieries Company Ltd.

Usha Martin Ltd.

Hindustan Petroleum Corporation Ltd.



